

# CENTRAL NEW HAMPSHIRE

## ARTS FROM THE HEART

Plymouth is the heart of New Hampshire – a cultural center that draws visitors from all over. Arts events happen all year long, but many are seasonal – you won't find all the same choices in summer as in winter.

Downtown Plymouth is the best place to start. First, let's hit the Museum of the White Mountains (34 Highland St.). The People's Forest: A Centennial Celebration of the White Mountain National Forest (running through September 12) tells stories of the forest through new, recreated,

Across the street is Artistic Roots, a co-op displaying the work of 40 member artists, plus a space for visiting artists' exhibitions. Café Monte Alto offers their own fair-trade coffee and tables indoors and outdoors. The café regularly exhibits work by local or regional artists. Grab a cup and sit with the art a while – so much better than glancing quickly and passing by.

Overlooking the Common is Maundy Mitchell Photography, studio of the renowned portrait photographer.

9 through August 7, presents fish paintings by Marcia Santore (full disclosure: that's me) to coincide with the release of her book of the same name (a reception and book signing will be held on July 12 from 3-5 p.m.).

As we head to South Main, we take a quick jog down to Railroad Square to visit River's Bend Woodworking Studio, where Liz Hallen creates her amazing, handcrafted furniture (see what I mean at [riversbendwood.com](http://riversbendwood.com)). Hallen said that she'll usually be open after 1:30 p.m. every day during the

### WANDERLUST

#### CENTRAL NEW HAMPSHIRE



Views of the Bernsen Gallery and studio in Ashland, New Hampshire (photograph by Marcia Santore).

and historic art and artifacts. There are so many associated events that you'll need to check their website to see them all: [www.plymouth.edu/museum-of-the-white-mountains](http://www.plymouth.edu/museum-of-the-white-mountains).

Let's head to Main Street and go into the Silver Center for the Arts, on the Plymouth State University campus for "Photography Through the Trees," featuring photographs by John Anderson, on view through September 7 (opening reception July 12, 6:30 pm). While you're on campus, sit with Bronze Bobby on his stone bench.

You may be able to schedule a sitting, if she's not on a shoot in Paris or someplace even more exotic. Try the contact page at [maundymitchell.com](http://maundymitchell.com). From there, it's just a few steps to Pease Public Library, which serves as a community art exhibition space, thanks to local artist and exhibition coordinator Paulette Brace. This summer, fiber artist Susan Wei shows her "Art as Social Comment," through July 7, when there'll be an artist reception from 3-5 p.m.. "Ichthyofoms," running from July

summer. The studio is located right behind the Flying Monkey, a rehabbed movie theater that does not stop! Silent films. Talking films. Stand-up comedy. Bands. Tribute bands. Their website ([flyingmonkeynh.com](http://flyingmonkeynh.com)) lists upcoming events – more than will fit here. They also serve meals and drinks, and hold events up in the balcony.

There are restaurants up and down Main Street. The locals like Thai Smile, Main Street Station (aka the diner), Downtown Pizza (we still call it Manny's), Biederman's Deli & Pub



(the door is just down the hill, under Chase Street Market), Phat Fish (the new kid in town – I haven't eaten there yet, but I like their outdoor umbrella tables), and Six Burner Bistro, with casual order-at-the-counter lunches (try the soups) and delicious fine dining at night.

The New Hampshire Music Festival brings classical musicians and music lovers to Plymouth from July 10 through August 11. There are orchestra, choral, and chamber music concerts at the Silver Center for the Arts. These concerts can sell out, so check the schedule at [nhmf.org](http://nhmf.org).

The Summer Concert Series takes place on Wednesdays from July 11 through August 29, from 7-8:30 p.m., on the Plymouth Town Common (and August 1 at the Amphitheater overlooking the Pemigewasset River). These are fun, casual, free, family events with different lively performers every week.

Downtown Plymouth has a lot to offer, but there's more to the town. Go back up Highland Street all the



way to the end. Turn left onto Route 25 (Tenney Mountain Highway). Look on your right for Hundlerut Studio. Artist Donald Hundgen is known for his intricate and hilarious pen-and-ink drawings. His wife, Sarah Hundgen, creates elegant ceramic pots. What I

can't get over are Don's papier-mâché sculptures. At first glance, they're funny. At second glance, you notice the same complexity in the painted surface as in Don's drawings. At third glance, you realize that what you took for goofiness in the form is actually something else, something balanced yet unearthly.

The Community Clay Center is tucked under and behind some businesses in a little Cape Cod-style house, so it can be a hard to find the first time. Three local ceramicists, Tamara Mann, Penny Huynen and Michelle Chamberlain, make and show their work and sometimes host exhibitions of other artists' work, as well.

Within a half-hour's drive or so is other art worth seeing. In Ashland, Bernsen Gallery is located in a restored 1849 Boston & Maine Railroad freight depot at 72 Depot St. You can't miss

Museum of the White Mountains at Plymouth State University.



The People's Forest: A Centennial Celebration of the White Mountain National Forest exhibition at Museum of the White Mountains at Plymouth State University.



it – it's surrounded by huge metal sculptures. Bill Bernsen told me that he doesn't weld anything – it all just fits together and is held in place by a nut or two.

Shanware Pottery in Rumney is the studio and gallery of ceramicist Richard Wetterer and includes a small sculpture garden outside, as well as work by some other local artists. This is a working studio, so you may see pottery being made.

In July, Patricia Ladd Carega Gallery (69 Maple St, Center Sandwich) is showing Emilie Clark's work based on microscopic life, along with Margery Thomas Mueller's large drawings on Yupo paper that evoke the forest; Cameron Roberts' landscapes appear in August.

Meredith, on Lake Winnepesaukee, is home to the Meredith Sculpture Walk, more than 30 sculptures by national artists located throughout the town; get the map at [www.greatermeredithprogram.com/map.html](http://www.greatermeredithprogram.com/map.html). The Lakes Region Fine Arts and Crafts Festival happens August 25-26. Interlakes Summer Theatre (1 Laker Lane) has productions of Evita; Show Boat; La Cage aux Folles; and Newsies; plus Honk, Jr.; Really Rosie, and Lion King, Jr. for the kids. Find more at [interlakestheatre.com](http://interlakestheatre.com).

| Marcia Santore

TRURO CENTER  
**Castle Hill**  
FOR THE ARTS

## WORKSHOPS ON CAPE COD IN VISUAL ARTS & WRITING

Michael David • Brenda Goodman  
Mark Dion • Mark Adams • Robert Pinsky  
Nick Flynn • Deborah Dancy • Joan Snyder

Painting • Drawing • Mixed Media • Printmaking  
Gardening • Kids Classes • Ceramics • Sculpture  
Digital Media • Fiber Art • Writing • Photography  
Horticulture • Culinary Arts

## ARTIST RESIDENCY PROGRAM at Edgewood Farm

October, November, December  
2 weeks to 3 months residency  
Writers • Painters • Printmakers  
Sculptors • Musicians • Ceramicists

Applications Due: Aug 1 visit [www.castlehill.org/opportunities-1](http://www.castlehill.org/opportunities-1)

**Aug 2** BBQ with Smoke Master David Grayson, at the Pamet Yacht Club, includes full dinner, open bar, raw bar and live entertainment – \$200 members, \$225 non-members

**Aug 11** Live and Silent Art Auction, at Edgewood Farm, a night of original artwork, live music and cocktails – Entry discounted for members.

Visit our website for our full events calendar!

508-349-7511 • [www.castlehill.org](http://www.castlehill.org) • Truro, MA

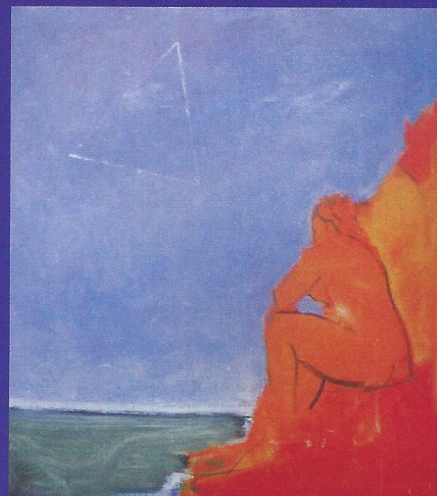


## CONGRATULATIONS TO MY GREAT ARTISTS CELEBRATING THEIR "NAUGHTY NINETIES"

VARUJAN BOGHOSIAN SALVATORE DEL DEO PAUL RESIKA



SALVATORE DEL DEO Beach Forest Lily Pond, 1983, 48" diameter



PAUL RESIKA Divine Geometry, 2002, oil on canvas, 60" x 52"



VARUJAN BOGHOSIAN Butterfly Sonata, Mixed Media Collage, 16 x 20" framed

# Berta Walker GALLERY

PROVINCETOWN 208 Bradford St 508 487 6411

WELLFLEET 40 Main St 774 383 3161

[BertaWalkerGallery.com](http://BertaWalkerGallery.com) AMPLE PARKING